

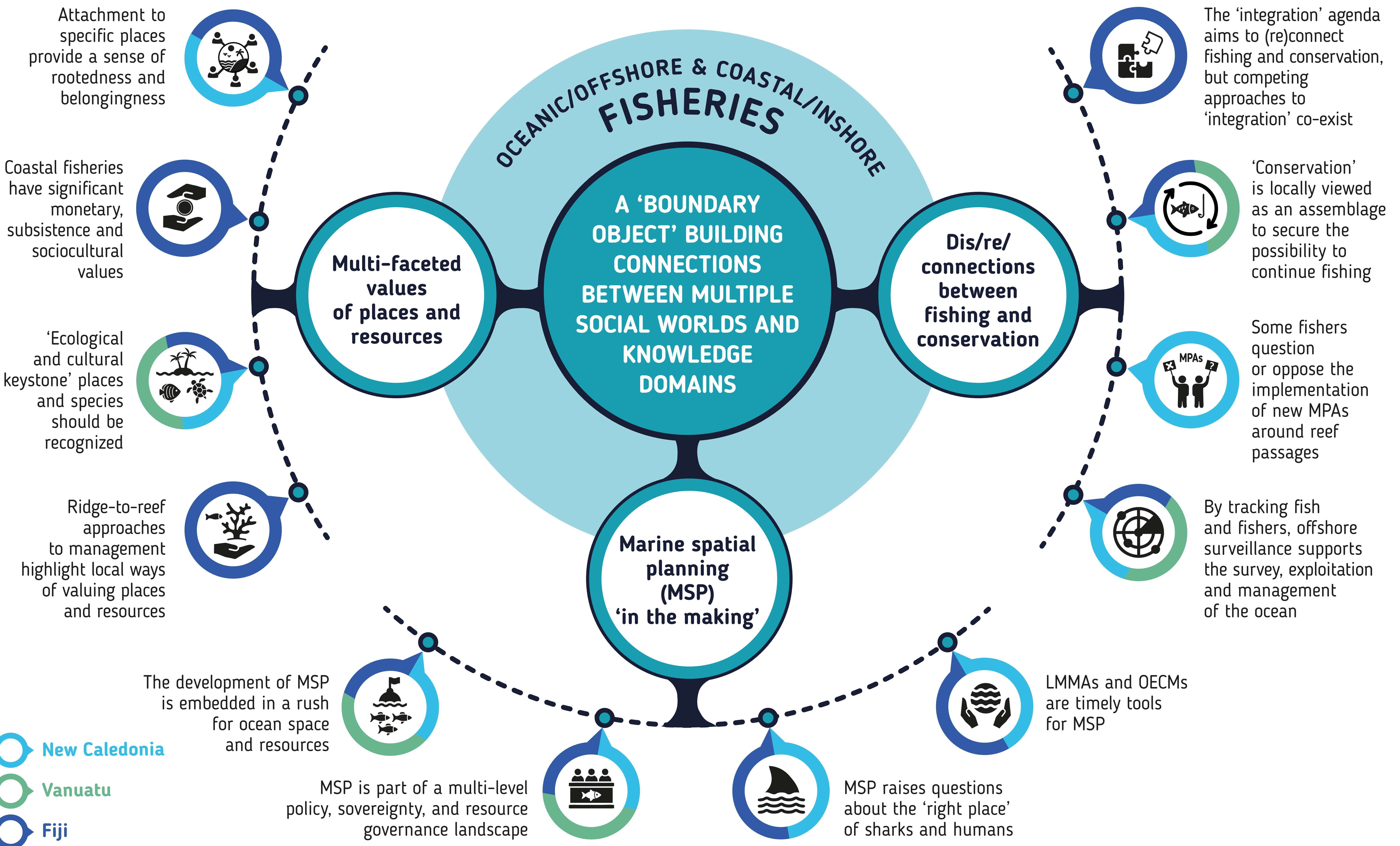
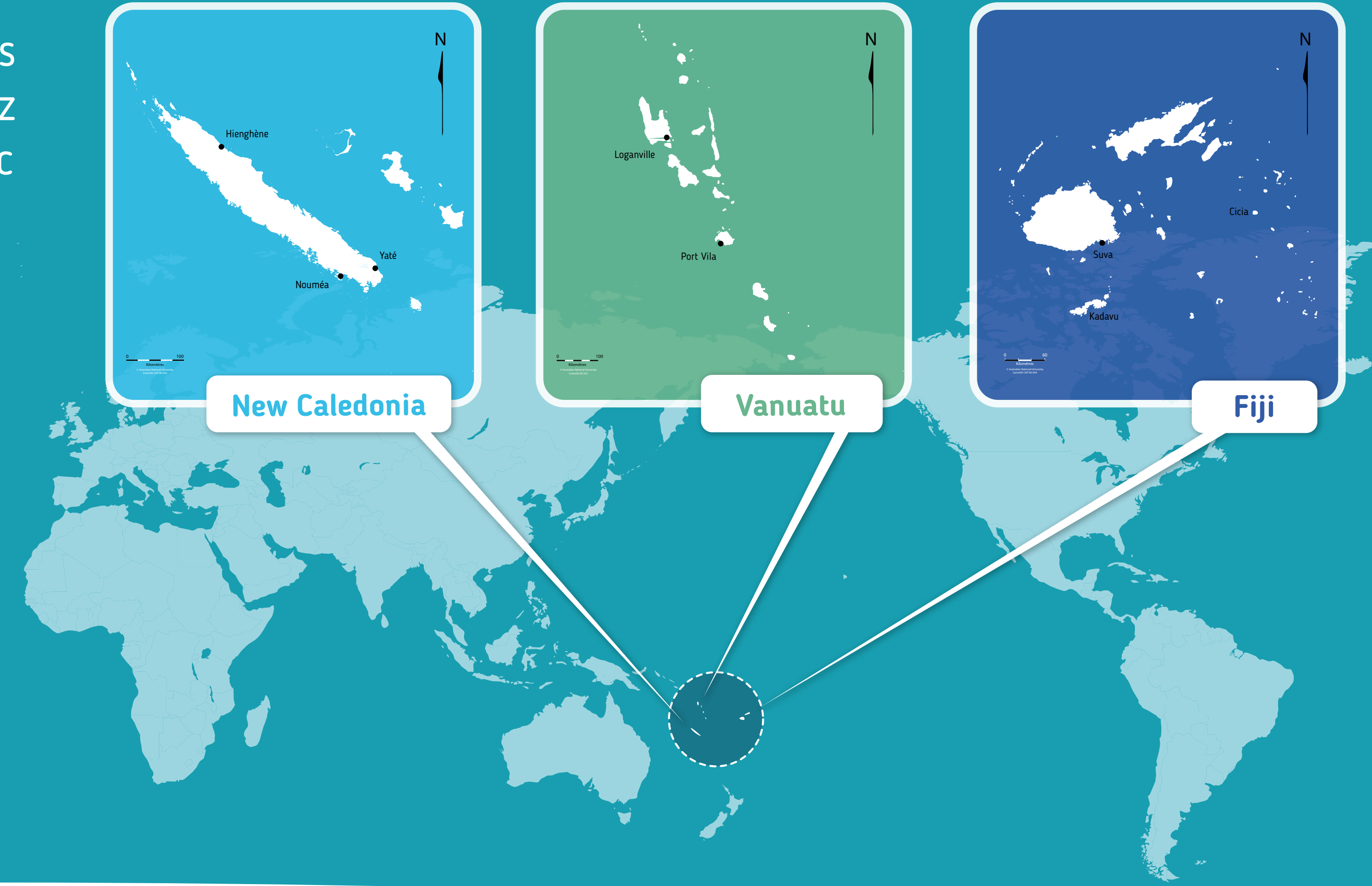
A SEA OF CONNECTIONS: CONTEXTUALIZING FISHERIES IN THE SOUTH PACIFIC REGION (SOCPACIFIC, 2018-2022)

OVERVIEW OF THE RESULTS OF AN INTERDISCIPLINARY, MULTI-LEVEL AND MULTI-STAKEHOLDER RESEARCH

SOCPacific was based on a partnership between three academic institutions across Europe and Oceania: Institut de Recherche pour le Développement (IRD); Leibniz Centre for Tropical Marine Research (ZMT); and The University of the South Pacific (USP). It was also supported by a larger consortium of external partners.

SOCPacific's main objective was to explore the complex web of socio-cultural, policy and geopolitical connections within which fisheries and their management are embedded in Oceania. This research project involved interdisciplinary, multi-level and multi-stakeholder investigations, with a main geographical focus on three study areas: Fiji, New Caledonia, and Vanuatu.

SOCPacific revitalized the study of South Pacific fisheries through the conceptualization of Oceania as 'a sea of connections'; a notion that highlights the multiple meanings, dimensions and expressions of ocean connectivity from/in Oceania.



SOCPacific involved a wide range of stakeholders of South Pacific fisheries, including both men and women fishers, various state and non-state fisheries managers, and school-children. It indeed aimed to ensure that many more critical voices - academic and non-academic - are heard and taken into account in defining the future(s) of the Pacific Ocean.

SOCPacific highlighted various dimensions of the land-sea continuum, to be considered from both the surface and depths of the Pacific Ocean, and whose health and sustainability are essential to the well-being and future(s) of Oceanians. These dimensions include: children's views of the inseparability of sea and land; ridge-to-reef approaches to marine management; reef passages as communication zones between lagoons and the open ocean.